



I 2000 AL and I 2000 HR

High-performance
Specially for
in-roof solutions

The I 2000 AL and I 2000 HR are new generation, high-performance flat-plate collectors. This series was developed especially for roof integration. Depending on the model, choice between an aluminium collector frame and a timber frame with high-density fibreboard rear wall.

Special performance features

- | High power output
- | Lightweight structured solar safety-glass
- | Harp-shaped absorber with highly selective coating
- | Increased thermal insulation of mineral wool (50 mm)
- | Interconnection of up to 7 collectors in series
- | Anodised cover profiles

Broad range of applications

- | Suitable for systems supporting drinking water and heating
- | Suitable for high-flow and low-flow operation
- | Exclusively suitable for roof integration

Easy to install

- | Easy installation due to the use of tried and tested fastener systems
- | Fast installation due to modular design with screwed-connection collector tubes

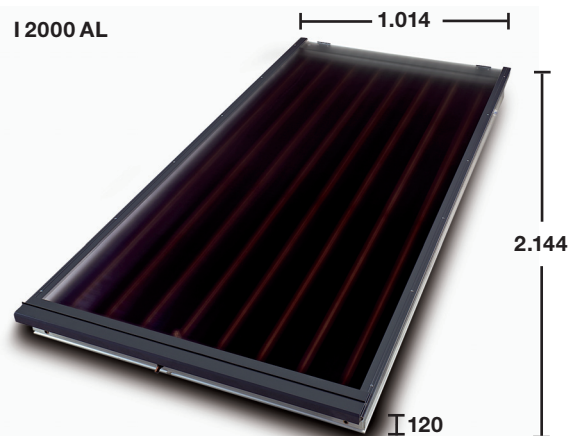
First-class production quality

- | High-performance collector with timber frame and high-density fibreboard rear wall or aluminium frame
- | Recyclable construction
- | 100% component testing

Certificates

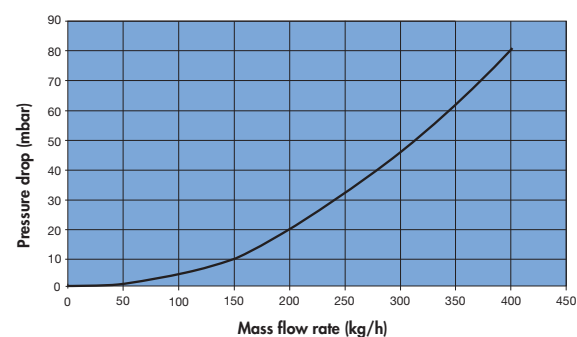
- | Tested in accordance with ÖNORM (Austrian Standard) M 7714
- | Meets conditions for grants by the Federal Provinces
- | Meets all the criteria of the Blue Angel (Blauer Engel)

I 2000 AL

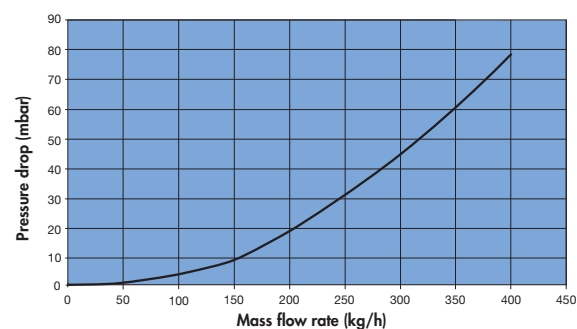


Collector's connectors at top in original
All dimensions in mm

Pressure loss of flat-plate collector I 2000 AL



Pressure loss of flat-plate collector I 2000 HR

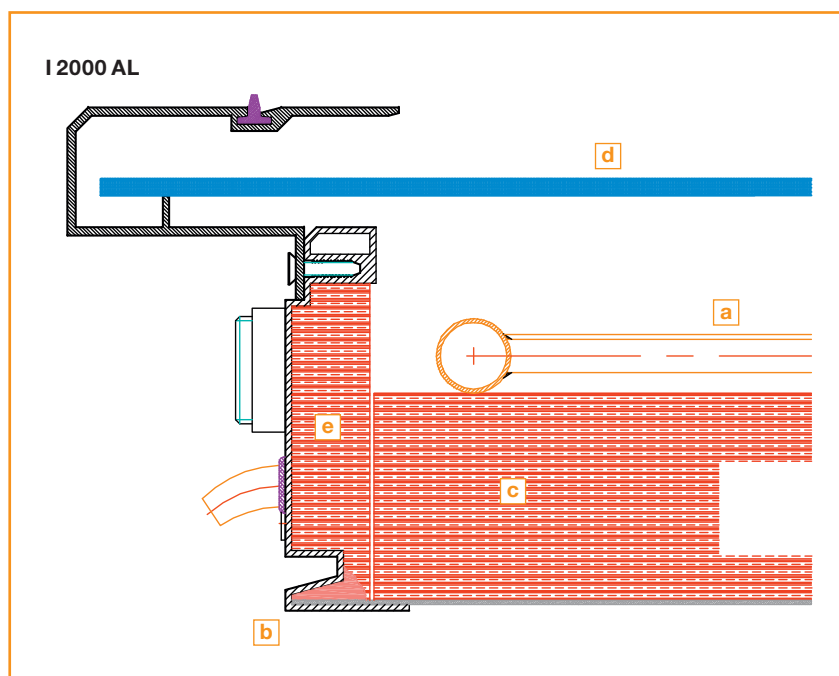




I 2000 AL and I 2000 HR

Overview

- A** Absorber
- B** Collector frame
- C** Rear wall insulation
- D** Glass panel
- E** Edge insulation



Types of installation

I 2000 AL

In-roof



Portrait
Tiled roof

I 2000 HR



Landscape
Tiled roof

	I 2000 AL	I 2000 HR
Design	Flat-plate collector portrait	Flat-plate collector portrait
Dimensions (W x H x D)	1,014 x 2,144 x 120 mm	1,014 x 2,144 x 115 mm
Gross area	2.17 m ²	2.17 m ²
Aperture area	1.90 m ²	1.90 m ²
Weight	45 kg	45 kg
Max. permissible operating pressure	6 bar	6 bar
Collector content	1.7 l	1.7 l
Absorber type	Fin, highly selective, blue, 2 serial tube sections each with 4 harp tubes	Fin, highly selective, blue, 2 serial tube sections each with 4 harp tubes
Cover	Solar safety-glass, 4 mm, lightly structured	Solar safety-glass, 4 mm, lightly structured
Collector frame	Aluminium frame profile and rear wall	Timber frame with high-density fibreboard rear wall
Connectors, diameters	2 connectors on the short side at top, 3/4"	2 connectors on the short side at top, 3/4"
Collectors in series	Max. 7	Max. 7

Available from:

Please contact us:
Tel. +43 (0)4262 37855-0
www.ripisol.at
Subject to technical changes